

Submittal

Ref. #: SQO022265_4

Vortex Air Separators- Models VA / VAS: 4" to 12"

Project name: Concord Adex- Park Place Block 11
Location:
Date submitted: 12/4/2020 8:49 PM
Engineer:

Representative:
Phone number:
e-mail:
Submitted by:

Application design data

Tag	Qty	Model
AS(dwg M-606A)	3	VAS 6

MATERIALS OF CONSTRUCTION

Shell: 4" to 6" Models: Cast Iron
8" to 12" Models: Fabricated Steel
Strainer: Stainless Steel mesh (N"× O")
Gasket: Non-asbestos

Notes

All models designed and built to ASME Pressure vessel code, section viii, Division 1.

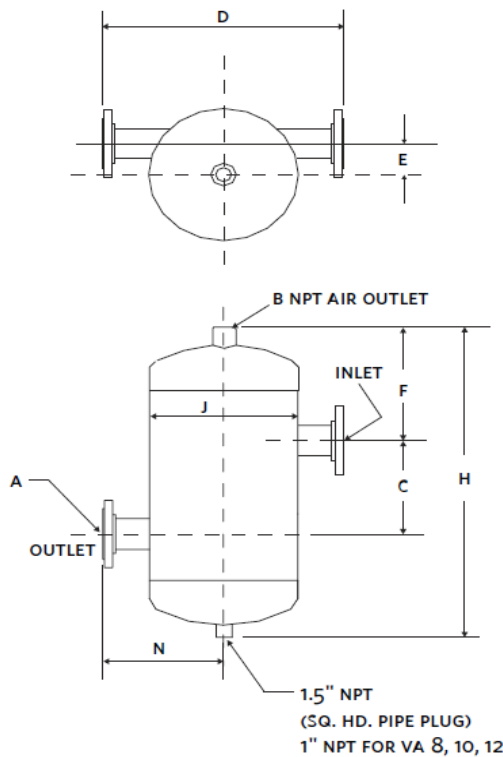
MAXIMUM OPERATING CONDITIONS

Max. working temperature: 375°F (190°C)
Max. working pressure: 4" to 6" Models: 160 psi (1103 kPa)
8" to 12" Models: 165 psi (1140 kPa)

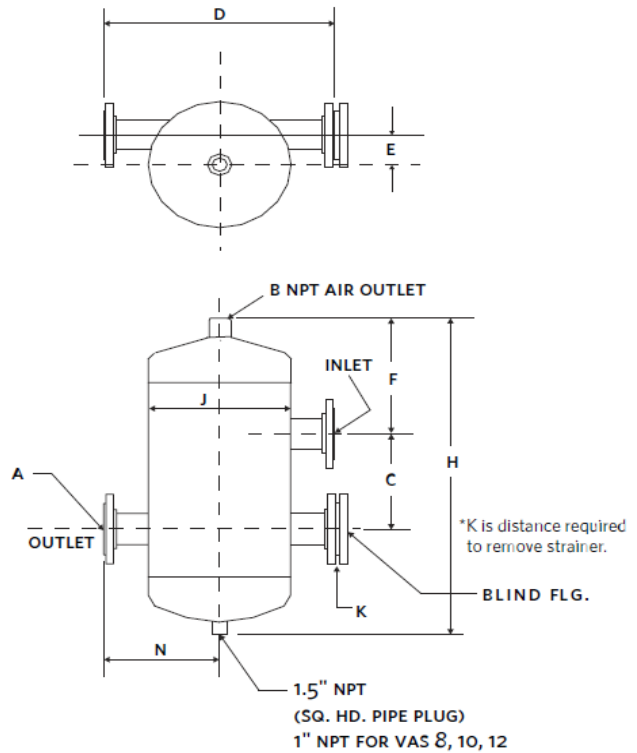
Connection type:

4" to 6" Models: 150# flanged ansi flat face.
8" to 12" Models: 150# flanged ansi raised face.

MODEL		DIMENSIONS inches (mm)										MAX. FLOW RATE IN USgpm (L/s) FOR LINE VELOCITY ft/s (m/s)			WEIGHT lbs. (kg)		STRAINER SCREEN FREE AREA
LESS STRAINER	WITH STRAINER	A	B	C	D	E	F	H	J	K	N	4 (1.22)	6 (1.83)	8 (2.44)	VA	VAS	Sq. in. (Sq. cm)
VA-4	VAS-4	4.00 (102)	1.50 (38)	9.50 (241)	18.00 (457)	2.25 (57)	6.80 (173)	22.25 (565)	10.75 (273)	16.00 (406)	9.00 (229)	160 (10.1)	240 (15.1)	320 (20.2)	121 (55)	151 (69)	76 (490)
VA-5	VAS-5	5.00 (127)	1.50 (38)	11.00 (279)	20.00 (508)	2.88 (73)	8.69 (221)	28.00 (711)	12.75 (324)	19.00 (483)	10.00 (254)	250 (9.84)	375 (14.8)	500 (31.6)	173 (79)	207 (94)	124 (800)
VA-6	VAS-6	6.00 (152)	1.50 (38)	12.50 (318)	24.00 (610)	4.00 (102)	9.85 (250)	32.24 (819)	16.00 (406)	22.00 (558)	12.00 (305)	360 (22.7)	540 (34.1)	720 (45.4)	264 (120)	306 (139)	183 (1181)
VA-8	VAS-8	8.00 (203)	2.00 (51)	16.00 (406)	28.00 (711)	5.00 (127)	12.81 (310)	41.25 (1048)	20.00 (508)	26.00 (660)	14.00 (356)	630 (39.8)	940 (59.3)	1250 (78.9)	228 (103)	332 (151)	302 (1949)
VA-10	VAS-10	10.00 (254)	2.00 (51)	20.00 (508)	32.00 (813)	5.75 (146)	15.00 (381)	49.50 (1257)	24.00 (610)	29.00 (737)	16.00 (406)	990 (62.5)	1500 (94.6)	1980 (124.9)	390 (177)	547 (248)	452 (2916)
VA-12	VAS-12	12.00 (305)	2.00 (51)	26.00 (660)	38.00 (965)	7.75 (197)	17.56 (446)	61.25 (1556)	30.00 (762)	36.00 (914)	19.00 (483)	1400 (88.3)	2100 (132.5)	2800 (176.7)	609 (276)	856 (388)	679 (4381)



MODEL VA



MODEL VAS

AUTOMATIC AIR ELIMINATOR | AAE-750 | SUBMITTAL

File No: 37.511
Date: DECEMBER 13, 2019
Supersedes: 5037.965
Date: NOVEMBER 30, 1997

MATERIALS OF CONSTRUCTION

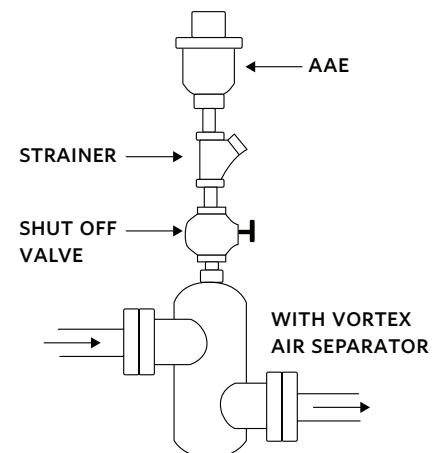
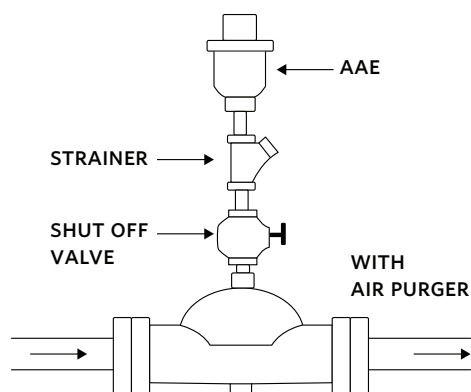
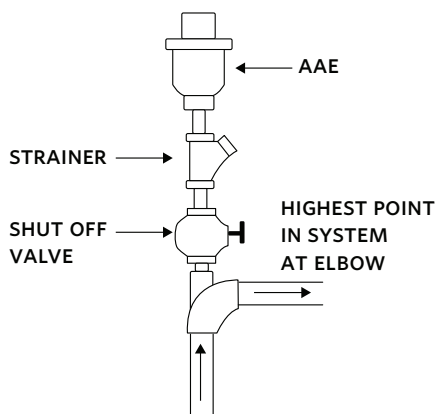
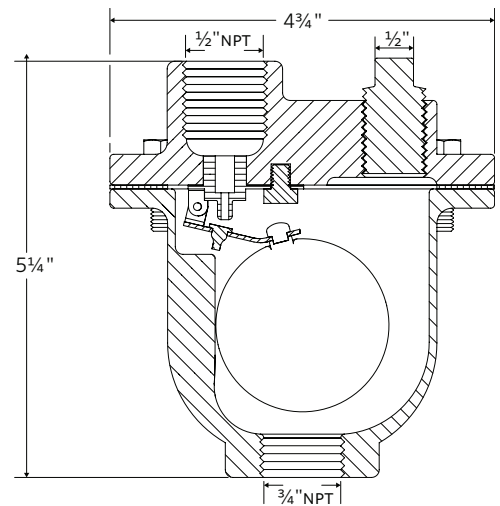
Cover and body	Cast iron A126
Control portion	Stainless steel
Bolts	Carbon steel
Valve seat	Stainless steel

SPECIFICATION

Air Elimination Range	150 psi at 250°F (10.34 bar at 121°C) 175 psi at 150°F (12.07 bar at 65.5°C)
Weight	5.5 lbs (2.49 kg)

INSTALLATION

1. Install the AAE - 750 in a vertical position with the system connection at 6 o'clock and the air passage to atmosphere at 12 o'clock.
2. The air passage opening at the top must be kept open and not plugged or blocked. It is recommended that a drain tube be installed from this opening to an open drain to prevent water damage in the event the operating mechanism becomes fouled by foreign material.
3. A strainer is recommended (installed as shown) on systems that could contain suspended particles which would affect the proper operation of this vent.



Submittal

Ref. #: SQO022265_4

Vortex Air Separators- Models VA / VAS: 4" to 12"

Project name: Concord Adex- Park Place Block 11
Location:
Date submitted: 12/4/2020 8:49 PM
Engineer:

Representative:
Phone number:
e-mail:
Submitted by:

Application design data

Tag	Qty	Model
AS(dwg M-606B)	2	VAS 6

MATERIALS OF CONSTRUCTION

Shell: 4" to 6" Models: Cast Iron
8" to 12" Models: Fabricated Steel
Strainer: Stainless Steel mesh (N"× O")
Gasket: Non-asbestos

Notes

All models designed and built to ASME Pressure vessel code, section viii, Division 1.

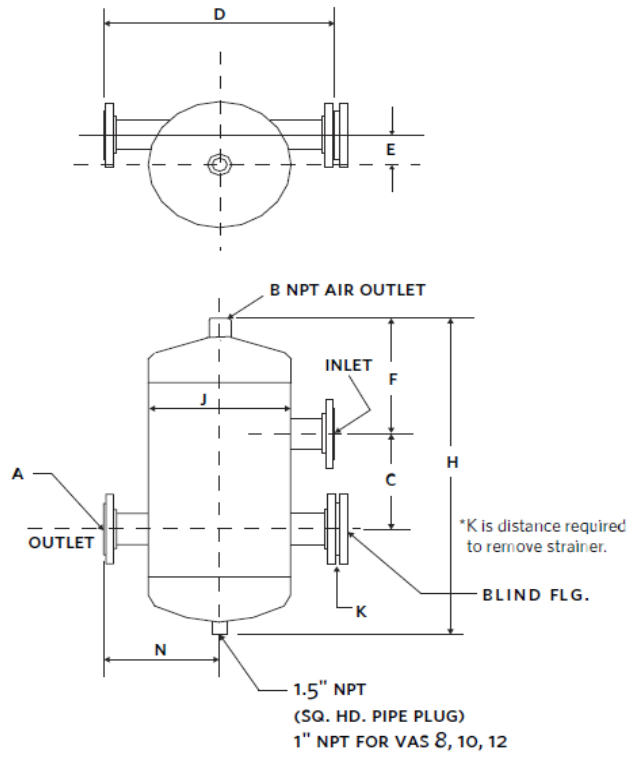
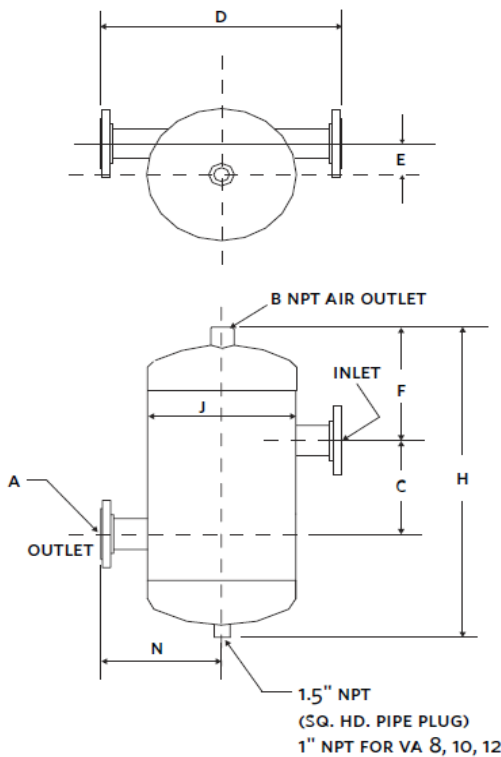
MAXIMUM OPERATING CONDITIONS

Max. working temperature: 375°f (190°c)
Max. working pressure: 4" to 6" Models: 160 psi (1103 kPa)
8" to 12" Models: 165 psi (1140 kPa)

Connection type:

4" to 6" Models: 150# flanged ansi flat face.
8" to 12" Models: 150# flanged ansi raised face.

MODEL		DIMENSIONS inches (mm)										MAX. FLOW RATE IN USgpm (L/s) FOR LINE VELOCITY ft/s (m/s)			WEIGHT lbs. (kg)		STRAINER SCREEN FREE AREA
												4 (1.22)	6 (1.83)	8 (2.44)	VA	VAS	Sq. in. (Sq. cm)
LESS STRAINER	WITH STRAINER	A	B	C	D	E	F	H	J	K	N	4 (1.22)	6 (1.83)	8 (2.44)	VA	VAS	Sq. in. (Sq. cm)
VA-4	VAS-4	4.00 (102)	1.50 (38)	9.50 (241)	18.00 (457)	2.25 (57)	6.80 (173)	22.25 (565)	10.75 (273)	16.00 (406)	9.00 (229)	160 (10.1)	240 (15.1)	320 (20.2)	121 (55)	151 (69)	76 (490)
VA-5	VAS-5	5.00 (127)	1.50 (38)	11.00 (279)	20.00 (508)	2.88 (73)	8.69 (221)	28.00 (711)	12.75 (324)	19.00 (483)	10.00 (254)	250 (9.84)	375 (14.8)	500 (31.6)	173 (79)	207 (94)	124 (800)
VA-6	VAS-6	6.00 (152)	1.50 (38)	12.50 (318)	24.00 (610)	4.00 (102)	9.85 (250)	32.24 (819)	16.00 (406)	22.00 (558)	12.00 (305)	360 (22.7)	540 (34.1)	720 (45.4)	264 (120)	306 (139)	183 (1181)
VA-8	VAS-8	8.00 (203)	2.00 (51)	16.00 (406)	28.00 (711)	5.00 (127)	12.81 (310)	41.25 (1048)	20.00 (508)	26.00 (660)	14.00 (356)	630 (39.8)	940 (59.3)	1250 (78.9)	228 (103)	332 (151)	302 (1949)
VA-10	VAS-10	10.00 (254)	2.00 (51)	20.00 (508)	32.00 (813)	5.75 (146)	15.00 (381)	49.50 (1257)	24.00 (610)	29.00 (737)	16.00 (406)	990 (62.5)	1500 (94.6)	1980 (124.9)	390 (177)	547 (248)	452 (2916)
VA-12	VAS-12	12.00 (305)	2.00 (51)	26.00 (660)	38.00 (965)	7.75 (197)	17.56 (446)	61.25 (1556)	30.00 (762)	36.00 (914)	19.00 (483)	1400 (88.3)	2100 (132.5)	2800 (176.7)	609 (276)	856 (388)	679 (4381)



Submittal

Ref. #: SQO022265_4

Vortex Air Separators- Models VA / VAS: 4" to 12"

Project name: Concord Adex- Park Place Block 11
Location:
Date submitted: 12/4/2020 8:49 PM
Engineer:

Representative:
Phone number:
e-mail:
Submitted by:

Application design data

Tag	Qty	Model
AS(dwg M-606B)	1	VAS 4

MATERIALS OF CONSTRUCTION

Shell: 4" to 6" Models: Cast Iron
8" to 12" Models: Fabricated Steel
Strainer: Stainless Steel mesh (N"× O")
Gasket: Non-asbestos

Notes

All models designed and built to ASME Pressure vessel code, section viii, Division 1.

MAXIMUM OPERATING CONDITIONS

Max. working temperature: 375°F (190°C)
Max. working pressure: 4" to 6" Models: 160 psi (1103 kPa)
8" to 12" Models: 165 psi (1140 kPa)

Connection type:

4" to 6" Models: 150# flanged ansi flat face.
8" to 12" Models: 150# flanged ansi raised face.

MODEL		DIMENSIONS inches (mm)										MAX. FLOW RATE IN			WEIGHT		STRAINER
												USgpm (L/s)					
LESS STRAINER	WITH STRAINER	A	B	C	D	E	F	H	J	K	N	4 (1.22)	6 (1.83)	8 (2.44)	VA	VAS	Sq. in. (Sq. cm)
VA-4	VAS-4	4.00 (102)	1.50 (38)	9.50 (241)	18.00 (457)	2.25 (57)	6.80 (173)	22.25 (565)	10.75 (273)	16.00 (406)	9.00 (229)	160 (10.1)	240 (15.1)	320 (20.2)	121 (55)	151 (69)	76 (490)
VA-5	VAS-5	5.00 (127)	1.50 (38)	11.00 (279)	20.00 (508)	2.88 (73)	8.69 (221)	28.00 (711)	12.75 (324)	19.00 (483)	10.00 (254)	250 (9.84)	375 (14.8)	500 (31.6)	173 (79)	207 (94)	124 (800)
VA-6	VAS-6	6.00 (152)	1.50 (38)	12.50 (318)	24.00 (610)	4.00 (102)	9.85 (250)	32.24 (819)	16.00 (406)	22.00 (558)	12.00 (305)	360 (22.7)	540 (34.1)	720 (45.4)	264 (120)	306 (139)	183 (1181)
VA-8	VAS-8	8.00 (203)	2.00 (51)	16.00 (406)	28.00 (711)	5.00 (127)	12.81 (310)	41.25 (1048)	20.00 (508)	26.00 (660)	14.00 (356)	630 (39.8)	940 (59.3)	1250 (78.9)	228 (103)	332 (151)	302 (1949)
VA-10	VAS-10	10.00 (254)	2.00 (51)	20.00 (508)	32.00 (813)	5.75 (146)	15.00 (381)	49.50 (1257)	24.00 (610)	29.00 (737)	16.00 (406)	990 (62.5)	1500 (94.6)	1980 (124.9)	390 (177)	547 (248)	452 (2916)
VA-12	VAS-12	12.00 (305)	2.00 (51)	26.00 (660)	38.00 (965)	7.75 (197)	17.56 (446)	61.25 (1556)	30.00 (762)	36.00 (914)	19.00 (483)	1400 (88.3)	2100 (132.5)	2800 (176.7)	609 (276)	856 (388)	679 (4381)

