



200 Tesma Way, Unit 9
Concord, ON L4K 0J9
(905)-738-1400

Submittal 220-11-009

PROJECT NAME PROJECT ADDRESS

Block 11 220-11 25-27 McMahon Dr. North York Ontario M2K 0E4

DATE SUBMITTED

Jul 12, 2024

TO

COMPANY

Concord Adex Developments Corp.

EMAIL

ADDRESS

82 Queens Wharf Rd Toronto, ON M5V 3Y2

FROM

System Admin

COMPANY

Consult Mechanical Inc.

EMAIL

admin@consultmechanical.com

ADDRESS

200 Tesma Way, Unit 9
Concord, ON L4K 0J9

Title

LOUVERED PENTHOUSE COLOR

Description

There are many variations of passages of Lorem Ipsum available, but the majority have suffered alteration in some form, by injected humour, or randomised words which don't look even slightly believable. If you are going to use a passage of Lorem Ipsum, you need to be sure there isn't anything embarrassing hidden in the middle of text. All the Lorem Ipsum generators on the Internet tend to repeat predefined chunks as necessary, making this the first true generator on the Internet. It uses a dictionary of over 200 Latin words, combined with a handful of model sentence structures, to generate Lorem Ipsum which looks reasonable. The generated Lorem Ipsum is therefore always free from repetition, injected humour, or non-characteristic words etc.

**ADDENDA
00 91 13 E-03**

The information listed below is to form part of the Contract Documents. All associated costs are to be included in Tender Price shown on Tender Form. Acknowledgment of this Addendum, by number, to be shown in space provided on Tender Form.

1 DRAWINGS

1.1 Refer to Drawing E300 – Ground Floor Plan – Power & Systems (issued within)

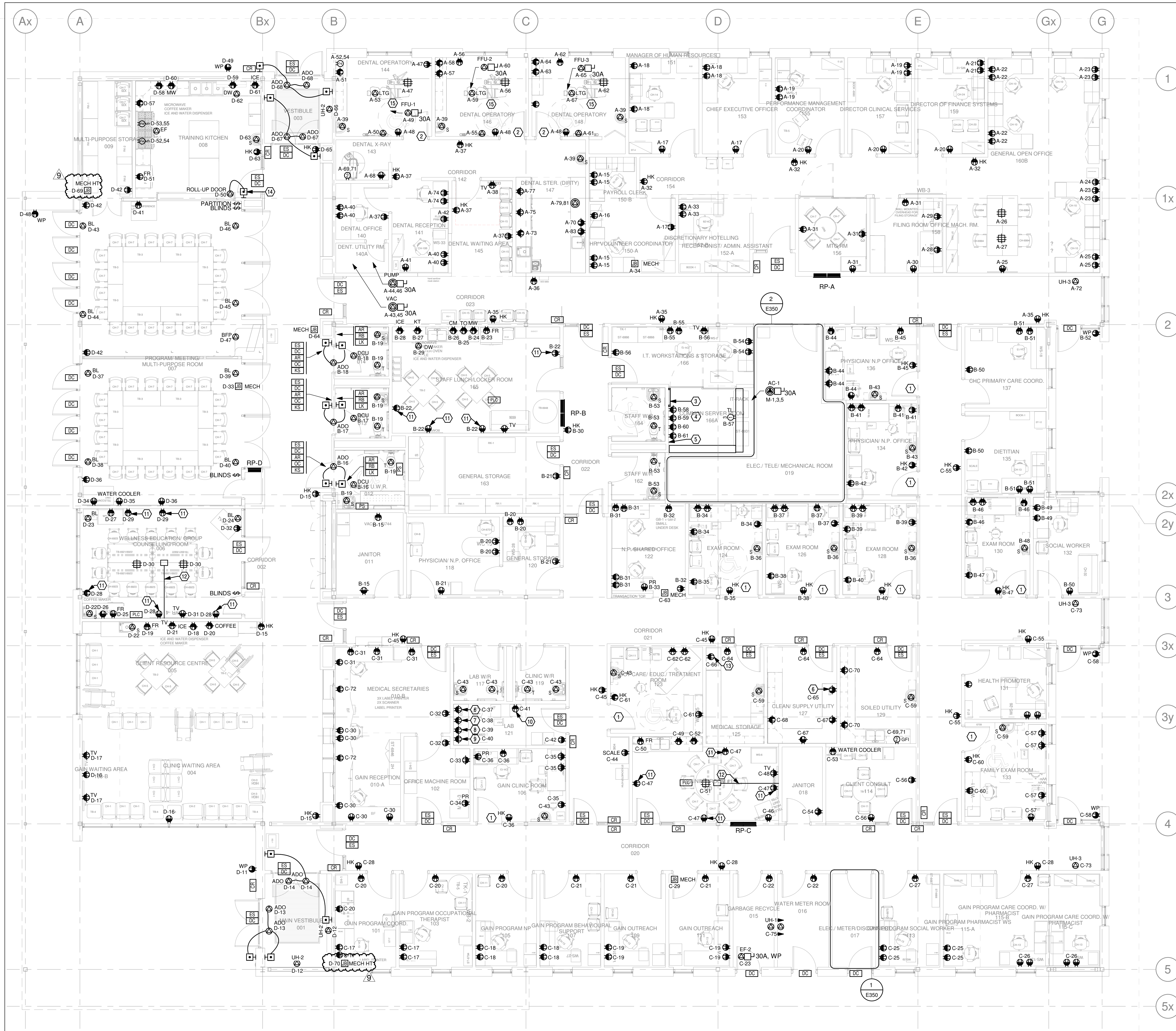
- .1 Added two 120V GFI circuits to be used for heat tracing. Power is by division 26, heat tracing cables, controller etc are by division 20.

1.2 Refer to Drawing E501 – Electrical Panel & Relay Schedules (issued within)

- .1 Revised panel schedule to support circuits for heat tracing.

END OF ADDENDUM

END OF SECTION



- ### GENERAL NOTES
- AREAS WHERE RECEPTACLES ARE BOTH ABOVE COUNTER HEIGHT AND STANDARD HEIGHT, RECEPTACLES ARE TO BE VERTICALLY CENTRED WITH EACH OTHER.
 - CONTRACTOR TO ENSURE WALLS THAT CONTAIN RECEPTACLES, NOT GANGED TOGETHER, AT THE SAME HEIGHT, ARE INSTALLED AT THE SAME HEIGHT TO PROVIDE A UNIFORM LOOK. REFER TO SPECIFICATIONS FOR MOUNTING HEIGHTS.
 - TV OUTLETS MOUNTING HEIGHTS ARE TO BE COORDINATED WITH TV MOUNTING HEIGHTS AND AV CONSULTANT PRIOR TO ROUGHING.
 - ALL POWER REQUIREMENTS FOR EQUIPMENT WITHIN THE DENTAL AREA ARE TO BE RE-COORDINATED WITH ACTUAL EQUIPMENT PRIOR TO ANY ROUGHING. ANY REVISION TO THE POWER DEVICES RESULTING FROM FAILURE TO DO SO WILL BE THE RESPONSIBILITY OF THE CONTRACTOR.

- ### DRAWING NOTES
- ROOM IS CONSIDERED A BASIC CARE ROOM AND REQUIRES ALL DEVICES TO BE HOSPITAL GRADE. REFER TO SPECIFICATIONS FOR MORE DETAILS ON DEVICES AND WIRING REQUIREMENTS. CONTRACTOR TO CARRY FOR #10 WIRING IN TENDER PRICE AND TO BE CONFIRMED VIA HOSPITAL RECEPTACLE TEST REPORT.
 - ROOM IS CONSIDERED AN INTERMEDIATE CARE ROOM AND REQUIRES ALL DEVICES TO BE HOSPITAL GRADE. REFER TO SPECIFICATIONS FOR MORE DETAILS ON DEVICES AND WIRING REQUIREMENTS. CONTRACTOR TO CARRY FOR #10 WIRING IN TENDER PRICE AND TO BE CONFIRMED VIA HOSPITAL RECEPTACLE TEST REPORT.
 - TELECOMMUNICATION GROUND BAR: CONNECT TELECOMMUNICATION GROUND BAR TO MAIN ELECTRICAL GROUND SYSTEM IN THE MAIN INCOMING ELECTRICAL ROOM VIA #20 AWG INSULATED GREEN COPPER CONDUCTOR (IN 3/4" PVC CONDUIT). CONNECTION TO BE MADE WITH COPPER COMPRESSION, TWO-HOLE LONG BARREL LUGS. TELECOMMUNICATION GROUND BAR TO BE 24"x4"x1/4", NO. OF MOUNTING POSITIONS 28 (PANDUIT - GB41028TP1-1)
 - CONNECT ALL RACKS AND CABLE TRAYS TO TELECOMMUNICATION GROUND BAR WITH A #6 INSULATED GREEN COPPER CONDUCTOR.
 - PROVIDE AND INSTALL 1-4FTx8FT FIRE RATED PLYWOOD BACKBOARD.
 - AUTOCLAVE.
 - CENTRIFUGE.
 - INCUBATOR.
 - ULTRASONIC CLEANER.
 - PHARMACEUTICAL REFRIGERATOR.
 - RECEPTACLE TO BE CONTROLLED BY PLUG LOAD CONTROLLER.
 - PROVIDE 2-1" C FROM BELOW DESK TO BEHIND TV. TERMINATE IN FLOOR BOX BELOW TABLE. TERMINATE IN STANDARD SINGLE GANG WALL BOX. REFER TO COMMUNICATION DRAWINGS FOR FACEPLATE REQUIREMENTS AND MORE DETAILS.
 - VACCINE REFRIGERATOR.
 - OVERHEAD DOOR CONTROL WIRING AND CONTROL BUTTONS ARE TO BE RECESSED WITHIN THE WALL SPACE.
 - COORDINATE ELECTRICAL SERVICES TO DENTAL CHAIR PRIOR TO ROUGHING IN SERVICES.



LETT ARCHITECTS INC.
138 Simcoe St. Peterborough ON
K9H 2H5
t. 705 743 3311 f. 705 743 0056
studio@lett.ca lett.ca

Consultant:
HHAngus
HH Angus and Associates Limited Consulting Engineers
1127 Leslie Street, Toronto, Ontario, M3C 2J6 Canada
www.HHAngus.com | T 416 443 8200 | F 416 443 8290

Stamp:

2021-05-17

All dimensions to be checked and verified on site. Do not scale drawings. Any discrepancies are to be reported to the Consultant. All drawings remain the property of the Consultant. Only latest approved drawings to be used for construction.

Project:
COMMUNITY CARE CITY OF KAWARTHA LAKES CCCKL COMMUNITY HEALTH CENTRE

21 ANGELINE ST. NORTH, LINDSAY, ON

Project North: True North:

No.	Description	Date
1	ISSUED FOR PRICING	2018/04/09
2	ISSUED TO THE IPC	2018/11/07
3	ISSUED FOR PERMIT	2019/11/25
4	RE ISSUED STG. 4.1 PRICING	2020/10/04
5	ISSUED FOR STG. 4.1	2020/10/30
6	ISSUED FOR TENDER	2021/05/17
7	RE ISSUED FOR BUILDING PERMIT	2021/06/04
8	ISSUED FOR ADDENDUM E-01	2021/06/09
9	ISSUED FOR ADDENDUM E-03	2021/07/05

Drawing Title:
GROUND FLOOR PLAN - POWER AND SYSTEMS

Scale: 1 : 75
Date: 2021/07/05
Job No.: 2171348
Drawn by: JP
Drawing No.: E300

